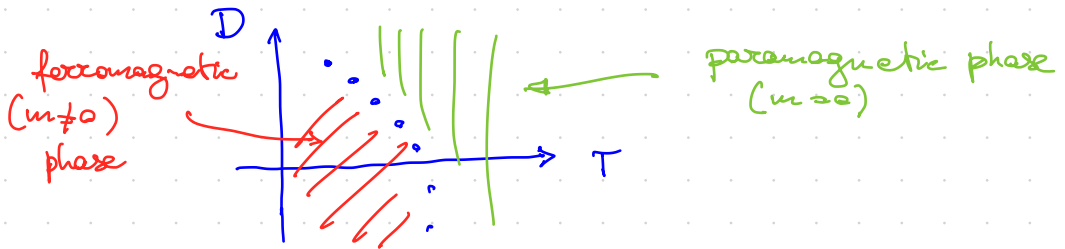




Session 5

Exercise 1

Based on the mean-field solution of the Blume-Capel model (session 4), plot the phase diagram in the D - T plane



- Discuss the nature of the line of phase transitions
- How do you decide which solution (when there are more than 1) is thermodynamically stable?

Exercise 2

Compute the antiFourier transform of $\frac{1}{k^2 + k_0^2}$

in three dimensions.

